

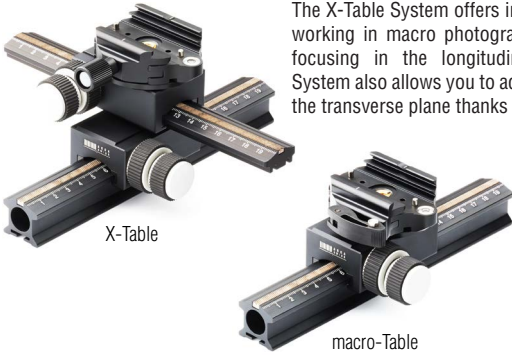
We recommend

ARCA-SWISS QuickLink



Finally a professional solution that eliminates the tedious fixing of the tripod head. ARCA-SWISS presents the new tripod mounting QuickLink. The combination of a mounting plate for the tripod and an insert plate which is attached to the tripod head makes attaching and detaching the tripod head child's play. The installed plates can thus be left permanently on the tripod or on the tripod head. By means of a solid bayonet, the tripod head with its insert plate is placed into the mounting plate and securely fixed by a knurled rotating ring.

ARCA-SWISS X-table System



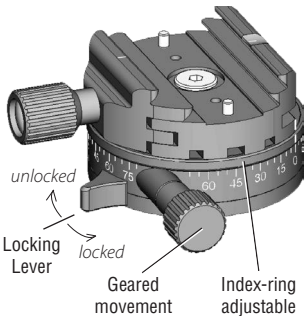
The X-Table System offers incredible precision when working in macro photography! In addition to fine focusing in the longitudinal plane, the X-Table System also allows you to adjust the fine operation in the transverse plane thanks to the crossover.

ARCA-SWISS Cube



Options for the Cube

Gearred panning (gp)



When first using your gp panning control knob, the gearing may feel stiff, requiring a bit of effort to turn the geared panning knob. This is normal for a new gp head. After a short period of break-in time the gp head will smooth out and turn easier.

Please note — The index-Ring under the quick release is user adjustable. The index mark on the index ring can be moved to a starting point for a series of panoramic captures or can be left at the zero position.

Leather bag



On our oiled leathers, because of temperature and moisture variations white spots can appear coming from the excess of oil resulting from the tanning process to create water resistant leather. This is the natural breathing of oiled leather. To remove these white spots you brush either softly or use „dry cleaning solvent“ on a towel. Never add oil or wax to clean these white residues. When leather is wet, never dry it near a heat source. Brush them regularly and for dirt, clean them with water or water and soap, then rinse.

ARCA-SWISS Cube gp

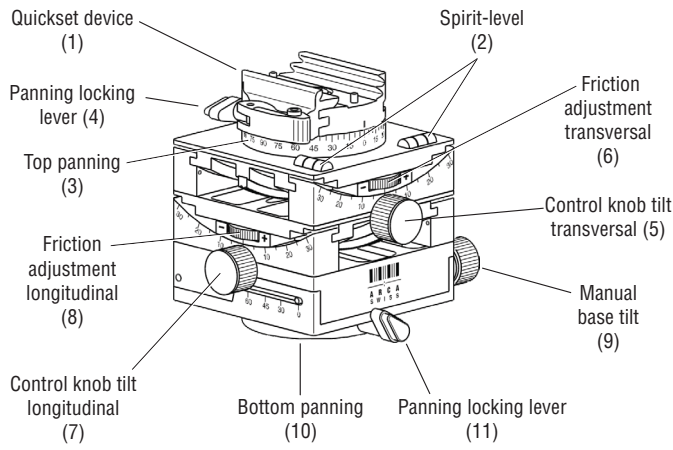


© Copyright, including translations by ARCA-SWISS International

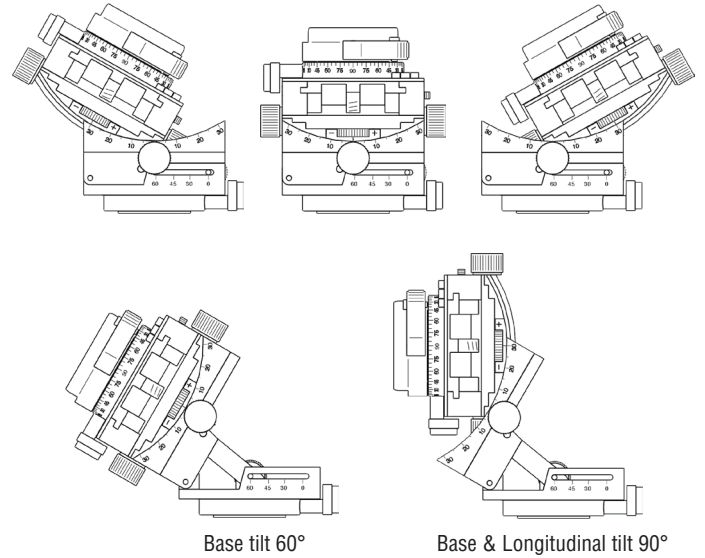


ARCA-SWISS International S.A.R.L.
29, rue de Châtillon, École Valentin
FR-25048 Besançon, France
support@arca-swiss.com
STD: ++33 381 85 40 60

The Functions :



Tilt Longitudinal & Transversal ± 30°



The Cube is mounted through the 3/8" thread in the bottom panning (10) onto the tripod. The turning inner circle of the bottom panning (10) must rest upon a hard, flat surface.

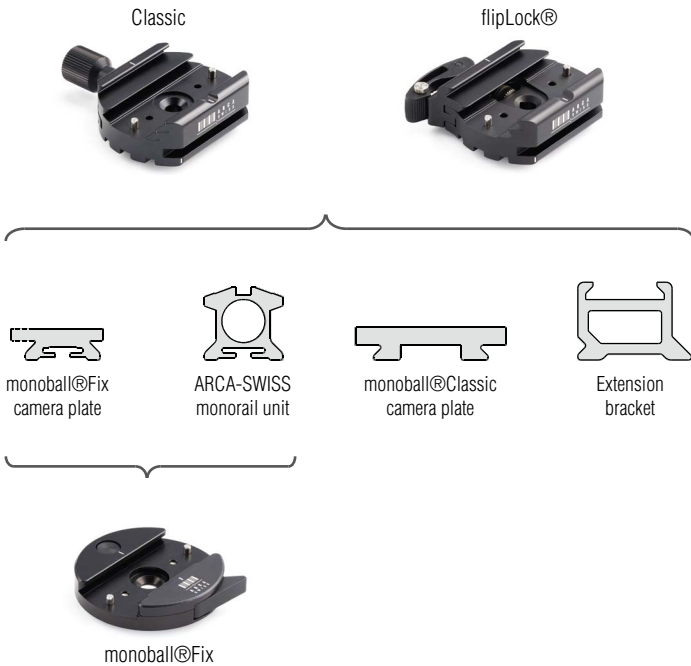
The camera is installed onto the ARCA-SWISS quickset device (1). The movement of the camera is effected inside the circular arc, thus a change of the object distance as well as the image selection hardly develops. Through loosening the panning locking lever (11) of the bottom panning (10) the desired image selection is determined and locked. Depending on the kind of image, the camera becomes in one or both axes longitudinal transverse aligned by means of the spirit levels. The manual base tilt (9) is used for camera angles of 30° and above. The range 0-30° should be made by the geared longitudinal control knobs (7). With slope angles under 30° the manual base tilt must be (9) engaged in the zero-position and fixed. After adjustment and leveling of the camera, the top panning (3) can be rotated while the camera remains leveled. The panning locking lever (4) locks the top pan (3). The basic friction of the tilts (transversal/longitudinal) using heavy cameras can be adjusted with the grey friction adjusting wheels (6, 8). If the base friction is correctly adjusted, the camera can be adjusted only by the control knobs (5, 7, 9) or by pushing manually the movement at the Cube head.

The movement of the camera is effected inside the circular arc, thus a change of the object distance as well as the image selection hardly develops.



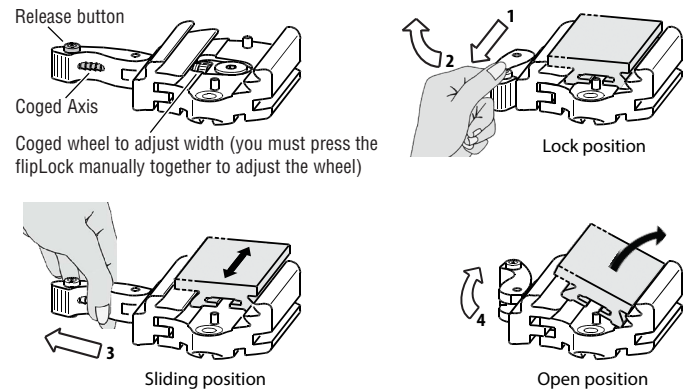
ARCA-SWISS quick release device

All tripod heads from ARCA-SWISS are available with a choice of quick release: Classic, flipLock® and monoball®Fix. The Classic and flipLock® systems are equipped with a double dovetail so that you can fit the classic camera plates in the upper dovetail and the monoball®Fix to the bottom. The Fix system is compatible with the monoball®Fix plates. All three of them are compatible with the monorails of the ARCA-SWISS cameras.



flipLock® instructions :

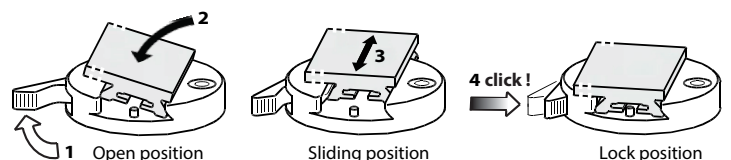
- To switch from the locked position to the sliding position :
 1. Pull the release button between your two fingers towards you.
 2. Swing the lever 90°.
- To switch from the sliding position to the fully opened position :
 3. Unlock the system by pulling the cogged axis with your thumb.
 4. Swing the handle fully.



CAUTION: The ARCA-SWISS flipLock® mechanism requires camera plates with similar tolerances (width) to lock camera plates securely. DO test all your camera plates if they lock securely with an adjusted flipLock® device ! ARCA-SWISS refuses explicit any liability for consequential damage to camera equipment mounted on third party camera plates not manufactured by ARCA-SWISS.

monoball®Fix instructions :

1. Open by pulling the clamping lever with your thumb
2. Insert the cameraplate (side opposite the clamping lever)
3. if necessary, center the cameraplate
4. **important:** lock by **clicking** on the clamping lever !



Classic instructions :

To open, turn the knob counterclockwise.
To close, turn the knob clockwise.