

We recommend

ARCA-SWISS QuickLink

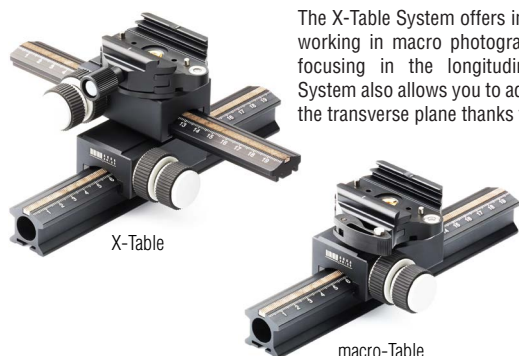


Finally a professional solution that eliminates the tedious fixing of the tripod head.

ARCA-SWISS presents the new tripod mounting QuickLink. The combination of a mounting plate for the tripod and an insert plate which is attached to the tripod head makes attaching and detaching the tripod head child's play. The installed plates can thus be left permanently on the tripod or on the tripod head.

By means of a solid bayonet, the tripod head with its insert plate is placed into the mounting plate and securely fixed by a knurled rotating ring.

ARCA-SWISS X-table System



The X-Table System offers incredible precision when working in macro photography! In addition to fine focusing in the longitudinal plane, the X-Table System also allows you to adjust the fine operation in the transverse plane thanks to the crossover.

The movement of the camera is effected inside the circular arc, thus a change of the object distance as well as the image selection hardly develops.



Core60leveler : $\pm 10^\circ$

Core75leveler : $\pm 15^\circ$

ARCA-SWISS Core75leveler



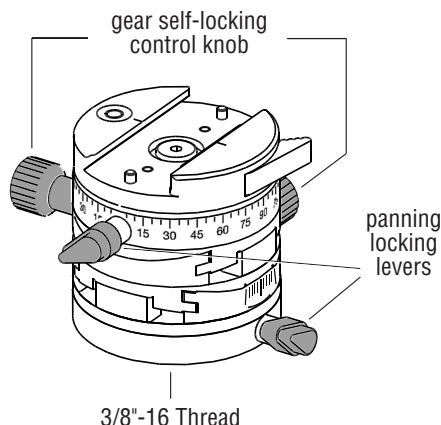
ARCA-SWISS Core60leveler



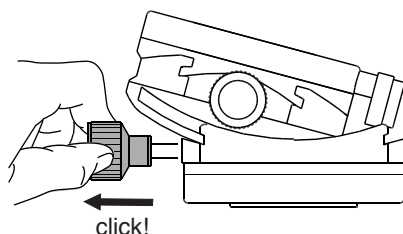
ARCA-SWISS International S.A.R.L.
29, rue de Châtillon, École Valentin
FR-25048 Besançon, France
support@arca-swiss.com
STD: ++33 381 85 40 60

Congratulations on your purchase of the latest ARCA-SWISS CoreLeveler.

IMPORTANT: the panning situated on top of the CoreLeveler should be used as the **LAST** adjustment !

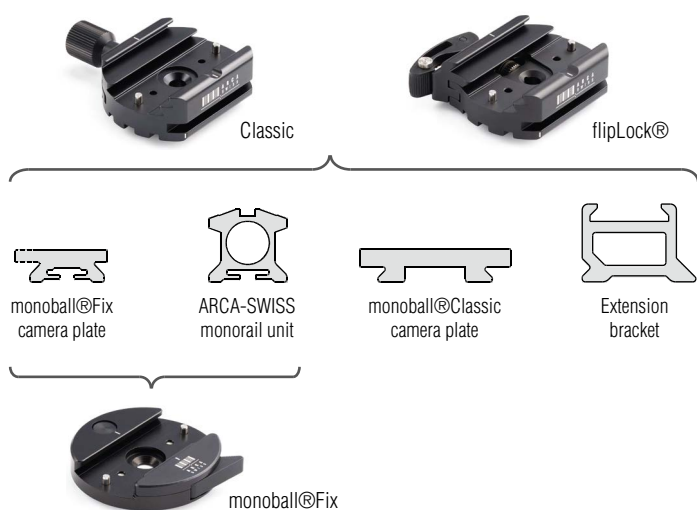


Exclusive to the Core 75 leveler: telescopic knobs



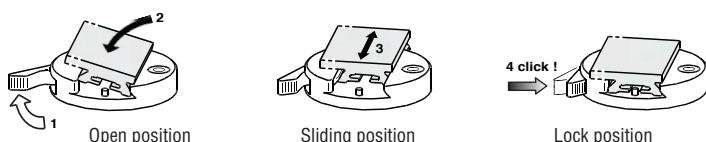
ARCA-SWISS quick release device

All tripod heads from ARCA-SWISS are available with a choice of quick release: Classic, flipLock® and monoball®Fix. The Classic and flipLock® systems are equipped with a double dovetail so that you can fit the classic camera plates in the upper dovetail and the monoball®Fix to the bottom. The Fix system is compatible with the monoball®Fix plates. All three of them are compatible with the monorails of the ARCA-SWISS cameras.



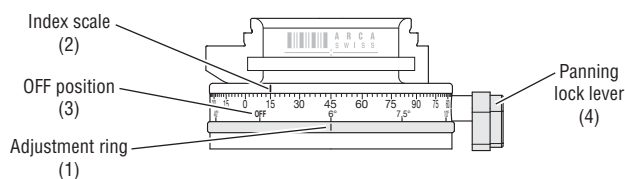
monoball®Fix instructions :

1. Open by pulling the clamping lever with your thumb
2. Insert the cameraplate (side opposite the clamping lever)
3. if necessary, center the cameraplate
4. **important:** lock by **clicking** on the clamping lever !



Option for the Core75leveler

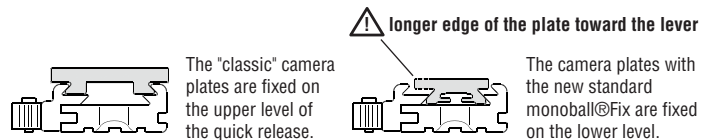
Incremental panning ClicPan® (cp)



- (1) Select a panoramic overlap interval by rotating the white index mark on the clicPan® (brass) adjustment ring. Rotate the ring until the index mark is aligned with your preferred interval detent setting. Ten positions are provided on the lower scale - 40° (9 stops), 30° (12 stops), 24° (15 stops), 20° (18 stops), 15° (24 stops), 12° (30 stops), 10° (36 stops), 7.5° (48 stops), 6° (60 stops) with an "OFF" position for 360° free panning movement. The clicPan® adjustment ring will turn in either direction. When rotated, the adjustment ring will stop and "clic" into the next detent setting. Once a setting has been chosen, the mounted camera will pan in equal increments through a 360° radius, with an audible "clic" at each position.
- (2) The degree of rotation can be visually checked using the upper index scale.
- (3) Move the clicPan® ring to the "OFF" position when 360° free panning is required.
- (4) To stop all panning rotation, tighten the upper panning lock lever. The upper pan must be unlocked when making incremental panoramic captures using one of the detent settings.

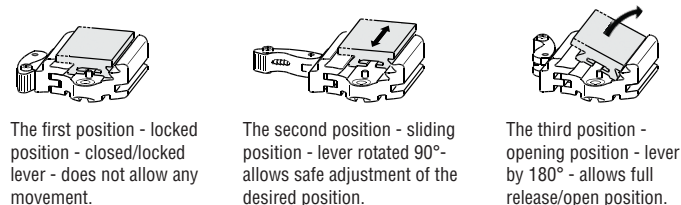
flipLock® instructions :

The ARCA-SWISS flipLock® quick release allows the use of the (most common) ARCA-SWISS "classic" camera plates, thanks to the two levels, all camera plates are also compatible with the new standard monoball®Fix.



The ARCA-SWISS flipLock® quick release offers an adjustment option that adapt to various camera plates that comply with the "ARCA-SWISS standard". Tolerances may vary from brand to brand.

The ARCA-SWISS quick release flipLock® offers 3 positions:



- The change from one position to the other is performed as follows:
 1. Pull the release button towards you between your thumb and forefinger.
 2. Then turn the lever 90° to the stop.
- To change from the sliding position to the open position:
 3. Push the serrated pin outward with a press of your thumb.
 4. Then swivel the lever until it is fully open.

Quickset device Classic instructions :

To open, turn the knob counterclockwise. To close, turn the knob clockwise.